

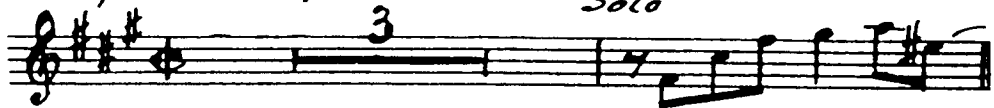
# HARLEM NOCTURNE

1st E♭ ALTO SAXOPHONE

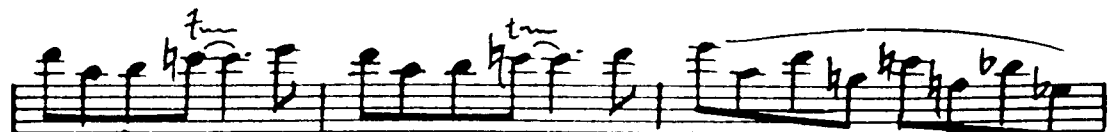
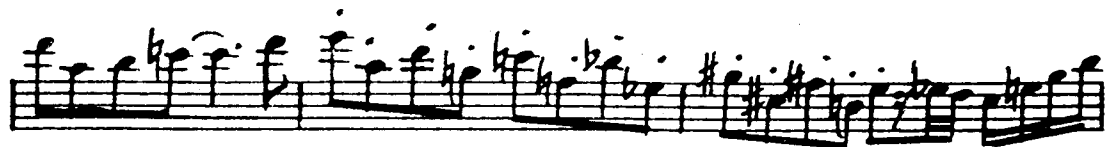
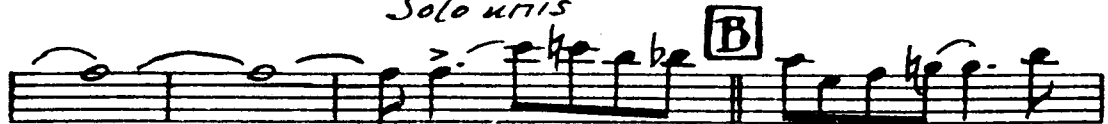
by EARLE HAGEN

*Tempo: Slow. Style: Smooth*

*Solo*



*Solo uris*



1st E $\flat$  ALTO SAXOPHONE

*Solo*

**C**

Three staves of musical notation. The first staff contains a melodic line with a slur over the first four notes and a triplet of eighth notes. The second and third staves continue the melodic line with various note values and slurs.

**D**

*Solo.*

Three staves of musical notation. The first staff begins with a measure rest and then continues the melodic line. The second and third staves continue the melodic line with various note values and slurs.

**E**

Three staves of musical notation. The first staff continues the melodic line. The second and third staves continue the melodic line with various note values and slurs.

Two staves of musical notation for piano accompaniment, labeled "OPTIONAL". The notation shows a simple harmonic accompaniment with chords and moving lines.

(FINGERING) } L.H. X OCTAVE KEY  
                  } R.H.